

17

T

A 3 3 3 3 3 3 3 3 3 3 3 4 4 4 4 4 3 3 3 3 3 3

B 1 1 1 1 1 1 1 1 1 1 1 2 2 2 2 2 1 1 1 1 1 1

21

T

A 3 3 3 3 3 3 3 4 4 4 4 4 4

B 3 3 3 3 3 3 3 2 2 2 2 2 2 0 0 0 0 0 0

| = 130

24

T

A 8 8 8 8 9 9 9 9 9 9 8 8 8 8 8 9 9 9 9 9 8 8 8 8 8 9 9 9 9 9

B 6 6 6 6 6 6 6 6 6 6 6 5 5 5 5 5 5 5 5 5 5 6 6 6 6 6 6 6 6 6

25

T

A 8 8 8 8 8 9 8 8 3 3 3 4 6

B 6 6 5 5 5 5 5 5 5 5 5 5 5

26

T

A 8 8 8 8 9 9 9 9 9 9 8 8 8 8 9 9 8 8 8 8 9 9 9 9 9 9 9 9

B 6 6 6 6 6 6 6 6 6 6 6 5 5 5 5 5 5 5 5 5 6 6 6 6 6 6 6 6

31

T

A 8 8 8 8 8 9 8 8 3 3 3 4 6

B 6 6 5 5 5 5 5 5 5 5 5 5 5

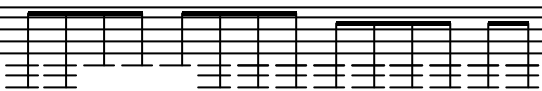
33

T

A 4 4 4 4 3 3 6 6 6 4 3 3 6 6 6 6 4 4 3 3 3 3 1 1 0 0 0 0 1 1 3 3 3 3

B 2 2 2 2 2 2 2 2 2 2 2 2 2 4 4 4 4 4 4 4 4 4 2 2 1 1 1 1 1 1 1 1 1 1

34



T


A

B

4 4 1 1 1 4 3 3 3 3 3 3 3 3

1 1 3 3 3 1 1 1 1 1 1 1 1 1

35



T


A

B

8 8

6 6 6 6 6 6 6 6 6 6 6 6 5 5 5 5 5 5 5 5 5 5

36



T


A

B

8 8

6 6 6 6 6 6 6 6 6 6 6 6 5 5 5 5 5 5 5 5 5 5

37



T


A

B

8 8

6 6 6 6 6 6 6 6 6 6 6 6 5 5 5 5 5 5 5 5 5 5

38



T


A

B

8 8

6 6 6 6 6 6 6 6 6 6 6 6 5 5 5 5 5 5 5 5 5 5

39



T


A

B

4 4 4 4 3 3 6 6 6 4 3 3 6 6 6 6 4 4 3 3 3 3 1 1 0 0 0 0 1 1 3 3 3 3

2 2 2 2 2 2 2 2 2 2 2 2 4 4 4 4 4 4 4 4 4 4 2 2 1 1 1 1 1 1 1 1 1 1

40



T

A

B

4 4 1 1 1 4 3 3 3 3 3 3 3 3 3 3

1 1 3 3 3 1 1 1 1 1 1 1 1 1 1 1

41

T
A
B

42

T

A

B

2 2 2 2 1 1 4 4 4 4 1 1 2 2 2 2 1 1 4 4 4 4 1 1

43

T

A

B

2 2 2 2 1 1 4 4 4 4 1 1 2 2 2 2 1 1 4 4 4 4 1 1

Diagram illustrating a musical score structure for three staves (T, A, B) over 44 bars. The notation shows complex rhythmic patterns, including beamed notes and rests, across the staves.

[illegible][illegible]

47

T
A
B 5 5 5 5 5 5 4 4 4 4 4 4 7 7 7 7 7 7 4 4 4 5 5 5 5 5 5 5 5 4 4 4 4 4
0 3 3 3 3 3 3 3 3 3 3 3

48

T
A
B 7 7 7 7 7 7 4 4 4 5 5 5
3 3 3 3 3 3 3 3 3 3 3 3

50

T
A
B 4 4 4 4 4 4 4 4 4 4 5 5 5 5 5 2 2 2 5 5 5 4 4 4 4 4 4 4 4 4
2 2

51

T
A
B 5 5 5 5 5 2 2 2 5 5
2 2 2 2 2 2 2 2 2 2

| = 135

52

T
A
B 2 2 2 2 9 9 9 9 9 10 10 10 10 10 9 9 9 4 4 5 2 2 2 2 9 9
0 0 0 0 0 0 0 0 0 6 6 6 6 6 6 7 7 7 2 2 3 0 0 0 0 0 0

53

T
A
B 9 9 9 7 7 7 7 7 9 9 9 4 4 5
7 7 7 6 6 6 6 6 7 7 7 6 6 7

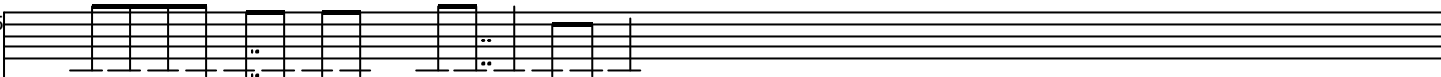
54



T
A
B

2	2	2	2	9	9	9	9	9	10	10	10	10	10	9	9	9	4	4	5	2	2	2	2	9	9
0	0	0	0	0	0	7	7	7	6	6	6	6	6	7	7	7	2	2	3	0	0	0	0	0	0

55



T
A
B

9	9	9	7	7	7	7	7	9	9	9	4	4	5
7	7	7	6	6	6	6	6	7	7	7	6	6	7

56



T
A
B

2	2	2	2	2	2	2	2	2	2	2	4	4	4	4	5	5	5	5	5	5	5	5	5	5	5
0	0	0	0	0	0	0	0	0	0	0	2	2	2	2	2	2	2	2	3	3	3	3	3	3	3

H

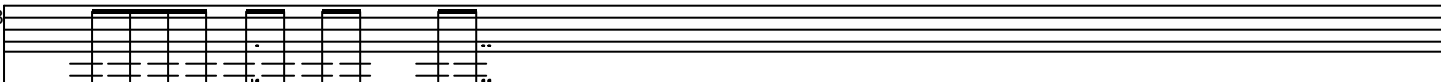
57



T
A
B

5	5	5	4	4	4	4	4	4	4	4	4	5	5	5	5	5	5	5	5	5	5	4	4	4	4	4
3	3	3	3	2	2	2	2	2	2	2	2	2	2	1	1	1	1	1	1	1	1	1	2	2	2	2

58



T
A
B

4	4	4	5	5	5	5	5	5	5
2	2	2	2	3	3	3	3	3	3

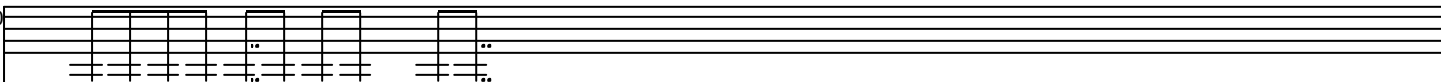
59



T
A
B

5	5	5	4	4	4	4	4	4	4	4	4	5	5	5	5	5	5	5	5	5	5	4	4	4	4	4
3	3	3	3	2	2	2	2	2	2	2	2	2	2	1	1	1	1	1	1	1	1	1	2	2	2	2

60



T
A
B

4	4	4	5	5	5	5	5	5	5
2	2	2	2	3	3	3	3	3	3

61



T
A
B

5	5	5	4	4	4	4	4	4	4	4	5	5	5	5	5	5	5	5	5	5	4	4	4	4	4	4
3	3	3	3	2	2	2	2	2	2	2	2	2	1	1	1	1	1	1	1	1	1	2	2	2	2	2

62

T
A
B

The Rose Tree

The musical score for 'T A B' features a guitar staff (top) and a bass staff (bottom). The guitar staff has a key signature of one sharp (F#) and a 4/4 time signature. The bass staff has a key signature of one flat (Bb) and a 4/4 time signature. The score is divided into three sections: 'T' (Tritone), 'A' (Augmented), and 'B' (Bimodal). The 'T' section consists of a single measure with a whole note chord. The 'A' section consists of two measures with whole note chords. The 'B' section consists of two measures with whole note chords. The guitar staff uses a capo on the 4th fret, and the bass staff uses a capo on the 1st fret. The score is written for a guitar and bass duo.

The musical score for 'T A B' consists of three staves. The top staff features a complex rhythmic notation with vertical lines and dots, indicating a sequence of notes or rests. The middle staff contains a series of notes, some of which are grouped together. The bottom staff shows a sequence of notes, with some notes being repeated or grouped. The notation is dense and intricate, typical of a complex musical composition.

The musical score for 'The Rose Tree' is presented in three parts: Treble (T), Alto (A), and Bass (B). The Treble staff features a melody with various note values and rests, including a final measure with a fermata. The Alto and Bass staves provide harmonic support with chords and single notes. The Bass staff includes a 'sl.' (slide) marking under the final measure. The score is written on a single system with a key signature of one flat and a common time signature.

The image shows a musical score for the song "The Wind" by Gustav Mahler. The score is in 3/4 time and G major. The vocal line is in the soprano register, and the piano accompaniment is in the right hand. The score is for the first system, measures 1-8.

Vocal Line:

Measures 1-8: The vocal line consists of a series of notes, mostly quarter and eighth notes, with some rests. The notes are: G4, A4, B4, C5, D5, E5, F#5, G5, A5, B5, C6, D6, E6, F#6, G6, A6, B6, C7, D7, E7, F#7, G7, A7, B7, C8, D8, E8, F#8, G8, A8, B8, C9, D9, E9, F#9, G9, A9, B9, C10, D10, E10, F#10, G10, A10, B10, C11, D11, E11, F#11, G11, A11, B11, C12, D12, E12, F#12, G12, A12, B12, C13, D13, E13, F#13, G13, A13, B13, C14, D14, E14, F#14, G14, A14, B14, C15, D15, E15, F#15, G15, A15, B15, C16, D16, E16, F#16, G16, A16, B16, C17, D17, E17, F#17, G17, A17, B17, C18, D18, E18, F#18, G18, A18, B18, C19, D19, E19, F#19, G19, A19, B19, C20, D20, E20, F#20, G20, A20, B20, C21, D21, E21, F#21, G21, A21, B21, C22, D22, E22, F#22, G22, A22, B22, C23, D23, E23, F#23, G23, A23, B23, C24, D24, E24, F#24, G24, A24, B24, C25, D25, E25, F#25, G25, A25, B25, C26, D26, E26, F#26, G26, A26, B26, C27, D27, E27, F#27, G27, A27, B27, C28, D28, E28, F#28, G28, A28, B28, C29, D29, E29, F#29, G29, A29, B29, C30, D30, E30, F#30, G30, A30, B30, C31, D31, E31, F#31, G31, A31, B31, C32, D32, E32, F#32, G32, A32, B32, C33, D33, E33, F#33, G33, A33, B33, C34, D34, E34, F#34, G34, A34, B34, C35, D35, E35, F#35, G35, A35, B35, C36, D36, E36, F#36, G36, A36, B36, C37, D37, E37, F#37, G37, A37, B37, C38, D38, E38, F#38, G38, A38, B38, C39, D39, E39, F#39, G39, A39, B39, C40, D40, E40, F#40, G40, A40, B40, C41, D41, E41, F#41, G41, A41, B41, C42, D42, E42, F#42, G42, A42, B42, C43, D43, E43, F#43, G43, A43, B43, C44, D44, E44, F#44, G44, A44, B44, C45, D45, E45, F#45, G45, A45, B45, C46, D46, E46, F#46, G46, A46, B46, C47, D47, E47, F#47, G47, A47, B47, C48, D48, E48, F#48, G48, A48, B48, C49, D49, E49, F#49, G49, A49, B49, C50, D50, E50, F#50, G50, A50, B50, C51, D51, E51, F#51, G51, A51, B51, C52, D52, E52, F#52, G52, A52, B52, C53, D53, E53, F#53, G53, A53, B53, C54, D54, E54, F#54, G54, A54, B54, C55, D55, E55, F#55, G55, A55, B55, C56, D56, E56, F#56, G56, A56, B56, C57, D57, E57, F#57, G57, A57, B57, C58, D58, E58, F#58, G58, A58, B58, C59, D59, E59, F#59, G59, A59, B59, C60, D60, E60, F#60, G60, A60, B60, C61, D61, E61, F#61, G61, A61, B61, C62, D62, E62, F#62, G62, A62, B62, C63, D63, E63, F#63, G63, A63, B63, C64, D64, E64, F#64, G64, A64, B64, C65, D65, E65, F#65, G65, A65, B65, C66, D66, E66, F#66, G66, A66, B66, C67, D67, E67, F#67, G67, A67, B67, C68, D68, E68, F#68, G68, A68, B68, C69, D69, E69, F#69, G69, A69, B69, C70, D70, E70, F#70, G70, A70, B70, C71, D71, E71, F#71, G71, A71, B71, C72, D72, E72, F#72, G72, A72, B72, C73, D73, E73, F#73, G73, A73, B73, C74, D74, E74, F#74, G74, A74, B74, C75, D75, E75, F#75, G75, A75, B75, C76, D76, E76, F#76, G76, A76, B76, C77, D77, E77, F#77, G77, A77, B77, C78, D78, E78, F#78, G78, A78, B78, C79, D79, E79, F#79, G79, A79, B79, C80, D80, E80, F#80, G80, A80, B80, C81, D81, E81, F#81, G81, A81, B81, C82, D82, E82, F#82, G82, A82, B82, C83, D83, E83, F#83, G83, A83, B83, C84, D84, E84, F#84, G84, A84, B84, C85, D85, E85, F#85, G85, A85, B85, C86, D86, E86, F#86, G86, A86, B86, C87, D87, E87, F#87, G87, A87, B87, C88, D88, E88, F#88, G88, A88, B88, C89, D89, E89, F#89, G89, A89, B89, C90, D90, E90, F#90, G90, A90, B90, C91, D91, E91, F#91, G91, A91, B91, C92, D92, E92, F#92, G92, A92, B92, C93, D93, E93, F#93, G93, A93, B93, C94, D94, E94, F#94, G94, A94, B94, C95, D95, E95, F#95, G95, A95, B95, C96, D96, E96, F#96, G96, A96, B96, C97, D97, E97, F#97, G97, A97, B97, C98, D98, E98, F#98, G98, A98, B98, C99, D99, E99, F#99, G99, A99, B99, C100, D100, E100, F#100, G100, A100, B100, C101, D101, E101, F#101, G101, A101, B101, C102, D102, E102, F#102, G102, A102, B102, C103, D103, E103, F#103, G103, A103, B103, C104, D104, E104, F#104, G104, A104, B104, C105, D105, E105, F#105, G105, A105, B105, C106, D106, E106, F#106, G106, A106, B106, C107, D107, E107, F#107, G107, A107, B107, C108, D108, E108, F#108, G108, A108, B108, C109, D109, E109, F#109, G109, A109, B109, C110, D110, E110, F#110, G110, A110, B110, C111, D111, E111, F#111, G111, A111, B111, C112, D112, E112, F#112, G112, A112, B112, C113, D113, E113, F#113, G113, A113, B113, C114, D114, E114, F#114, G114, A114, B114, C115, D115, E115, F#115, G115, A115, B115, C116, D116, E116, F#116, G116, A116, B116, C117, D117, E117, F#117, G117, A117, B117, C118, D118, E118, F#118, G118, A118, B118, C119, D119, E119, F#119, G119, A119, B119, C120, D120, E120, F#120, G120, A120, B120, C121, D121, E121, F#121, G121, A121, B121, C122, D122, E122, F#122, G122, A122, B122, C123, D123, E123, F#123, G123, A123, B123, C124, D124, E124, F#124, G124, A124, B124, C125, D125, E125, F#125, G125, A125, B125, C126, D126, E126, F#126, G126, A126, B126, C127, D127, E127, F#127, G127, A127, B127, C128, D128, E128, F#128, G128, A128, B128, C129, D129, E129, F#129, G129, A129, B129, C130, D130, E130, F#130, G130, A130, B130, C131, D131, E131, F#131, G131, A131, B131, C132, D132, E132, F#132

[illegible]

71

Tablature for measures 71-73:

T	A	B
	2 2 9 9 10 10 9 9	2 2 9 9 10 10 9 9
	2 2 7 7 8 8 7 7	2 2 7 7 8 8 7 7
	0 0	0 0

74

Tablature for measures 74-76:

T	A	B
	2 2 4 4 3 3 1	2 2 4 4 3 3 1
	2 2 6 6 5 5 3	2 2 6 6 5 5 3
	0 0	0 0

| = 180

77

Tablature for measures 77-79:

T	A	B
	4 4 4 3 3 3 3 3 3 3 3 3 3 3 3 3 3 3 3 3 3 3	5 5 5 4 4 4 4 4 4 4 4 4 4 4 4 4 4 4 4 4 4 4
	7 7 7 6 6 6 6 6 6 6 6 6 6 6 6 6 6 6 6 6 6 6	7 7 7 6 6 6 6 6 6 6 6 6 6 6 6 6 6 6 6 6 6 6

78

Tablature for measures 78-80:

T	A	B
	4 4 4 3 3 3 3 3 3 3 3 3 3 3 3 3 3 3 3 3 3 3	5 5 5 4 4 4 4 4 4 4 4 4 4 4 4 4 4 4 4 4 4 4
	7 7 7 6 6 6 6 6 6 6 6 6 6 6 6 6 6 6 6 6 6 6	7 7 7 6 6 6 6 6 6 6 6 6 6 6 6 6 6 6 6 6 6 6

81

Tablature for measures 81-83:

T	A	B
	2 2	3 3
	5 5	5 5

82

Tablature for measures 82-84:

T	A	B
	2 2	3 3
	5 5	5 5

83

Tablature for measures 83-85:

T	A	B
	4 4 4 3 3 3 3 3 3 3 3 3 3 3 3 3 3 3 3 3 3 3	5 5 5 4 4 4 4 4 4 4 4 4 4 4 4 4 4 4 4 4 4 4
	7 7 7 6 6 6 6 6 6 6 6 6 6 6 6 6 6 6 6 6 6 6	7 7 7 6 6 6 6 6 6 6 6 6 6 6 6 6 6 6 6 6 6 6

86

Tablature for measures 86-88:

T	A	B
	4 4 4 3 3 3 3 3	7 7 7 6 6 6 6 6
	3 3 3 3 3 3 3 3	6 6 6 6 6 6 6 6
	3 3 3 3 3 3 3 3	6 6 6 6 6 6 6 6

90

Tablature for measures 90-92:

T	A	B
	2 2 2 2 2 2 2 2	5 5 5 5 5 5 5 5
	2 2 2 2 2 2 2 2	5 5 5 5 5 5 5 5
	2 2 2 2 2 2 2 2	5 5 5 5 5 5 5 5

93

Tablature for measures 93-95:

T	A	B
	2 2 2 2 2 2 2 2	5 5 5 5 5 5 5 5
	2 2 2 2 2 2 2 2	5 5 5 5 5 5 5 5
	2 2 2 2 2 2 2 2	5 5 5 5 5 5 5 5

96

1 = 150

Tablature for measures 96-98:

T	A	B
	6 6 4 6 6 4 7 5	6 6 6 7 7 7 7 5
	6 6 4 6 6 4 7 5	6 6 6 7 7 7 7 5
	6 6 4 6 6 4 7 5	6 6 6 7 7 7 7 5

99

Tablature for measures 99-101:

T	A	B
	6 6 4 6 6 4 7 7	6 6 6 7 7 7 7 7
	5 7 5 6 6 4 6 6	5 7 5 6 6 4 6 6
	4 7 7 5 7 7 5 5	4 7 7 5 7 7 5 5

102

Tablature for measures 102-104:

T	A	B
	0 4 0 4 5 0 5 0	6 6 6 7 5 5 7 7
	0 4 0 4 5 0 5 0	6 6 6 7 5 5 7 7
	0 4 0 4 5 0 5 0	6 6 6 7 5 5 7 7

103

Tablature for measures 103-105:

T	A	B
	0 4 0 4 5 0 5 0	6 6 6 7 5 5 7 7
	0 4 0 4 5 0 5 0	6 6 6 7 5 5 7 7
	0 4 0 4 5 0 5 0	6 6 6 7 5 5 7 7

104

T
A
B

106

T
A
B

108

T
A
B

110

T
A
B

112

T
A
B

114

T
A
B

116

T
A
B

118

T
A
B

120

T
A 0 4 0 4 6 4 7 5 0 5 0
B 6 4 0 4 6 4 7 5 0 5 7

122

T
A 0 4 0 4 6 4 7 5 0 5 0
B 6 4 0 4 6 4 7 5 0 5 7

124

T
A 6 6 4 6 6 4 7 7 5 7 5 6 6 4 6 4 7 7 5 7 7 5
B 6 6 4 6 6 4 7 7 5 7 5 6 6 4 6 4 7 7 5 7 7 5

127

T
A 6 6 4 6 6 4 7 7 5 7 5 6 6 4 6 4 7 7 5 7 7 5
B 6 6 4 6 6 4 7 7 5 7 5 6 6 4 6 4 7 7 5 7 7 5

130

T
A 0 4 0 4 6 7 5 0 5 0
B 0 4 6 4 6 7 5 0 5 7

132

T
A 0 4 0 4 6 4 7 5 0 5 0
B 6 4 0 4 6 4 7 5 0 5 7

134

T
A 0 4 0 4 6 4 7 5 0 5 0
B 6 4 0 4 6 4 7 5 0 5 7

136

T
A 0 4 0 4 6 4 7 5 0 5 0
B 6 4 0 4 6 4 7 5 0 5 7

138

T

A

B

6 6 4 6 4 7 7 5 7 5 6 4 6 6 7 7 5 7 7 5

[illegible]

140

[illegible]

145

The musical score for guitar is written on a single staff. It begins with a treble clef and a key signature of one flat (B-flat). The tempo is marked 'Allegretto' and the time signature is 3/4. The score consists of a series of chords and single notes, with some measures containing multiple notes. The tablature for the bass line is provided below the staff, showing fingerings for the left hand. The tablature is written in a standard format, with numbers 1-4 representing fingers and 'x' representing a natural or muted note. The bass line is written in a 3/4 time signature, matching the guitar score.

T

A

B

9 9 9 9 10 10 10 9 9 9 9 9 10 10 12 10 10 9 10 10 9 7 7 9

10 10 10 10 10 10 10 10 10 10 10 10 12 12 12 12 12 10 10 10 10 9 9 9

146

T

A

B

9 9 10 9 9 7 5 5 7 5 5 4 5 5 7 5 5 4 2 2 4 5 4 2

7 7 7 7 7 7 7 7 7 7 7 5 5 5 5 5 5 5 3 3 3 3 3 3

49

T

A

B

9 9 9 9 10 10 10 10 9 9 9 9 9 10 10 12 10 10 9 10 10 9 7 7 9

| = 130



T
A 9 9 9 9 9 9 9 7 5 5 5 7 4 4 4 4
B 7 7 7 7 7 7 7 5 7 7 7 5 2 2 2 2



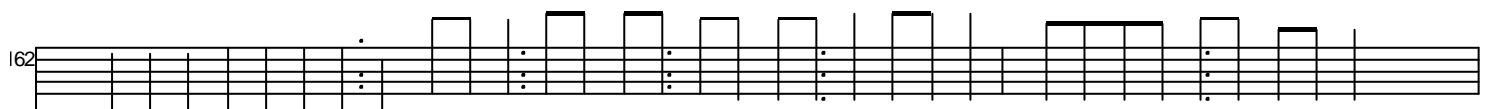
T
A 9 9 9 9 9 9 9 7 5 5 5 7 9 4 4 4
B 7 7 7 7 7 7 7 5 7 7 7 5 7 2 2 2



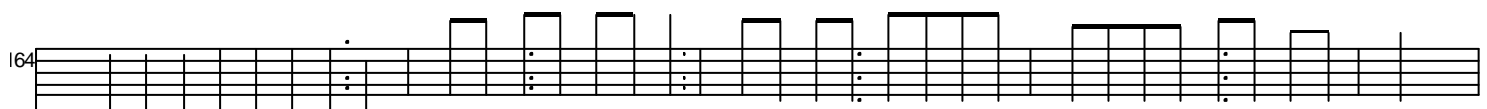
T
A 9 9 9 9 9 9 9 7 5 5 5 7 4 4 4 4
B 7 7 7 7 7 7 7 5 7 7 7 5 2 2 2 2



T
A 9 9 9 9 9 9 9 7 5 5 5 5 7 7 7 7 9 9 9 9 11 11 11 11
B 7 7 7 7 7 7 7 5 7 7 7 7 5 5 5 5 7 7 7 7 9 9 9 9



T
A 12 12 12 14 14 14 14 11 11 11 11 12 12 12 12 11 11 11 11 12 12 12 12 9 9 9 9 11 8 8 8 8
B 10 10 10 10 10 10 10 10 10 10 10 10 10 10 10 10 9 9 9 9 9 9 9 9 9 9 9 9 9 9 9



T
A 12 12 12 14 14 14 14 11 11 11 11 12 12 12 12 11 11 11 11 12 12 12 12 9 9 9 9 11 8 8 8 8
B 10 10 10 10 10 10 10 10 10 10 10 10 10 10 10 10 9 9 9 9 9 9 9 9 9 9 9 9 9 9 9

169

T


A

B

[illegible]

The image shows a musical score for the song "The Rose Tree". It is written for three voices: Tenor (T), Alto (A), and Bass (B). The music is in 3/4 time, indicated by the "3x" marking above the final measure. The key signature has one flat (B-flat). The score consists of two systems. The first system has 12 measures, and the second system has 12 measures. The lyrics "The Rose Tree" are written below the Bass staff. The Tenor and Alto parts have lyrics that are mostly "O" or "A" in the first system, and "The Rose Tree" in the second system. The Bass part has the full lyrics "The Rose Tree" in the first system and "The Rose Tree" in the second system. The score ends with a double bar line and a repeat sign.

179



T 5 5 5 5 5 5 5 5 5 | 5 5 5 5 5 5 6 6 | 6 6 6 6 6 6 6 6 | 6 6 6 6 5

A 7 7 7 7 7 7 7 7 7 | 7 7 7 7 7 7 7 7 | 7 7 7 7 7 7 7 7 | 7 7 7 7 7 7 7 7

B 0 0 0 0 0 0 0 0 0 | 0 0 0 0 0 0 0 0 | 0 0 0 0 0 0 0 0 | 0 0 0 0 0 0 0 0

183

T 3 3 3 3 3 3 3 | 4 4 4 4 0 0 0 1 0 0 0 0 0 0 | 0 0 0 0 0 0 | 5
A 4 4 4 4 4 4 4 | 5 5 5 5 5 5 5 5 5 5 5 5 5 5 | 1 1 1 1 1 1 | 5
B 5 5 5 5 5 5 5 | 0 0 0 0 0 0 0 0 0 0 0 0 0 0 | 0 0 0 0 0 0 | 0